

Data Sheet

Open Steel Gratings - SP350-30/100-3

Forge Welded gratings are especially designed for platforms, landings and walkways for use in all types of industrial applications. Their specific features include, an excellent loading bearing capacity coupled with torsional rigidity, and are particular suited where heavy duty gratings are required. Corresponding welding between load bars and cross bars allows them to withstand shearing forces without any issues. Suitable depths and mesh patterns are specified based on using static and dynamic loading in conjunction with the required clear span.

Technical Details

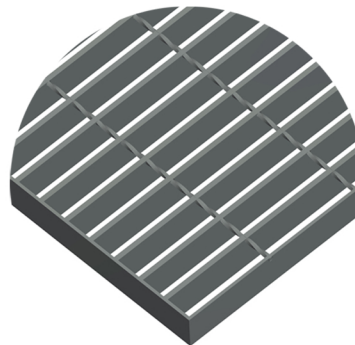
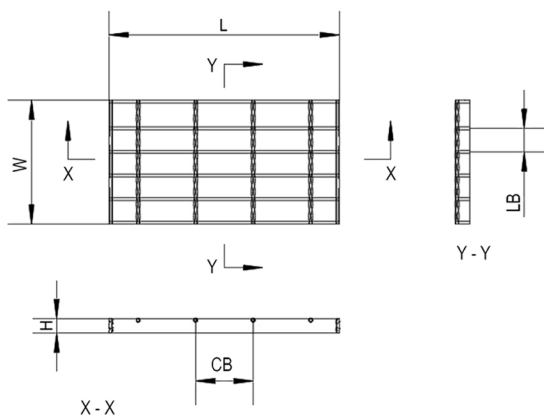
Material	Mild Steel S275JR	Standard	BS EN 10025
Finish	Self Colour, Galvanised		BS EN ISO 1461
Depth	50mm		
Thickness	Load Bar (LB)		3mm
	Cross Bar (CB)		5 to 6mm (Diagonal)
Slip Resistance, Surface Type	PTV 43 (Wet), Plain		BS7976
Mesh Pitch	30mm x 100mm, 35mm Ball proof		BS EN ISO 14122
Standard Stocked Sizes	6000mm x 1000mm (L x W)		
Weight (per m ²)	39.1kg		

Loading

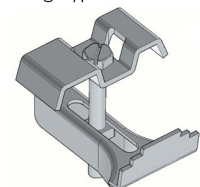
Max Clear Span	1862mm	*Clear distance between supports
Uniform Distributed Load (UDL)	5kN/m ²	UDL to conform to **EN ISO 14122
UDL Deflection	3.60mm	Deflection for UDL load at given span
Point Load	1.5kN	Point Load to conform **EN ISO 14122
Contact Area	200 x 200mm	Point load area
Point Load Deflection	4.00mm	Deflection for point load at given span
Fixing compatibility	B141K, B133K	

*Supports must be fully supported on two opposing sides of the clear span

** EN ISO 14122 states deflection between adjacent loaded and unloaded panels must not exceed 4mm



Fixing Types



B141K