

Pressure Locked Steel Treads

Data Sheet

Open Steel Treads

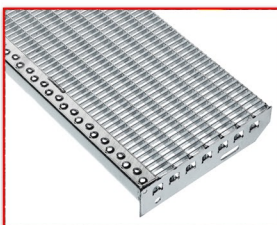
Pressure Locked treads are manufactured in the same types of steel gratings used for platforms, landings and walkways, for use in all types of residential, commercial and architectural applications. Standard features include serrated and perforated nosing bars to the leading edge and welded end plates. All stair treads are inert gas welded in specific jigs. The welded end plates are always supplied with a round and a slotted fixing hole giving flexibility when installing. All our treads are designed to fulfill the requirements detailed in BS EN ISO 14122-3:2016 & BS4592.2006 + A1;2012. Additional support may be required for tread widths that are over the specified widths in accordance with these specifications.

Technical Details

Material	Mild Steel S275JR , Stainless	Standard BS EN 10025
Finish	Self Colour, Galvanised, Mill finish	BS EN ISO 1461
Height	Typically 25, 30 & 40mm	
Thickness	Load Bar (LB) Cross Bar (CB)	2 & 3mm, others possible 2 & 3mm, others possible
Slip Resistance, Surface Type		Dependant on mesh centres
Mesh Pitch		Various
Standard Stocked Depth		240, 270 & 305mm (Special sizes POA)
Fixing compatibility		Dependant on mesh centres

Typical Maximum Clear Spans (mm)

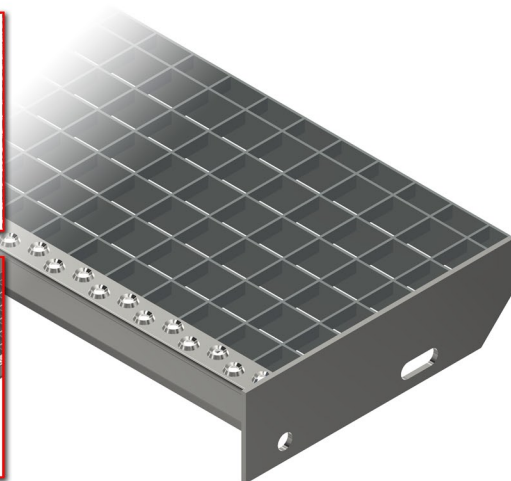
Load Bar Depth	Mesh Pitch(mm)	Load Bar Thickness		
		2mm	3mm	5mm
Plain				
25mm	33/33 or 33/11	665mm	828mm	960mm
30mm	33/33 or 33/11	809mm	971mm	1149mm
40mm	33/33 or 33/11	1120mm	1200mm	1328mm
Serrated				
25mm	33/33 or 33/11	615mm	752mm	895mm
30mm	33/33 or 33/11	748mm	914mm	1069mm
40mm	33/33 or 33/11	1069mm	1200mm	1260mm



20mm Ball Proof

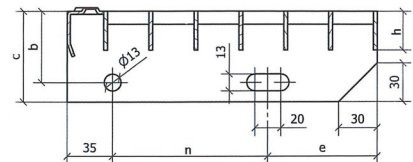


Riser Plates



Typical End Plate Details

28/35 Octopus Nosing



Typical Pressure Locked Tread Sizes							
Type	Bearing bar	Dimension	b	c	n	e	kg/piece
P 230-33-3	30 x 2 mm	600 x 205 mm	55	70	95	75	3.5
P 230-33-3	30 x 2 mm	600 x 240 mm	55	70	120	85	4.2
P 230-33-3	30 x 2 mm	600 x 270 mm	55	70	150	85	4.6
P 230-33-3	30 x 2 mm	800 x 240 mm	55	70	120	85	5.3
P 230-33-3	30 x 2 mm	800 x 270 mm	55	70	150	85	5.9
P 230-33-3	30 x 2 mm	800 x 305 mm	55	70	180	90	6.6
P 230-33-3	30 x 2 mm	1000 x 240 mm	55	70	120	85	6.8
P 230-33-3	30 x 2 mm	1000 x 270 mm	55	70	150	85	7.6
P 230-33-3	30 x 2 mm	1000 x 305 mm	55	70	180	90	8.0
P 330-33-3	30 x 3 mm	1000 x 240 mm	55	70	120	85	8.2
P 330-33-3	30 x 3 mm	1000 x 270 mm	55	70	150	85	9.2
P 330-33-3	30 x 3 mm	1000 x 305 mm	55	70	180	90	10.3
P 340-33-3	40 x 3 mm	1200 x 240 mm	55	70	120	85	11.8
P 340-33-3	40 x 3 mm	1200 x 270 mm	55	70	150	85	13.2
P 340-33-3	40 x 3 mm	1200 x 305 mm	55	70	180	90	14.8

