

## Data Sheet

### Open GRP Treads

GRP treads can be supplied in all suitable types of our GRP gratings. Each tread has an integral GRP yellow gritted angle nosing to its leading edge. This angle adds strength and contributes to the treads sustainability, and also shows up the leading edge, significantly increasing safety. Angle cleats can also be supplied if required.

See the table below for standard widths and depth dimensions guaranteeing solid edges to treads. Other widths are possible but please note this may result in open/finger edges All our GRP treads are designed to fulfill the requirements detailed in BS EN ISO 14122-3 : 2016 & BS4592 : 2006 + A1: 2012. Additional support may be required for tread widths that are over the specified widths in accordance with these specifications.

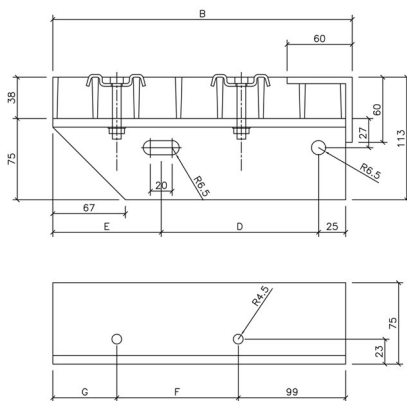
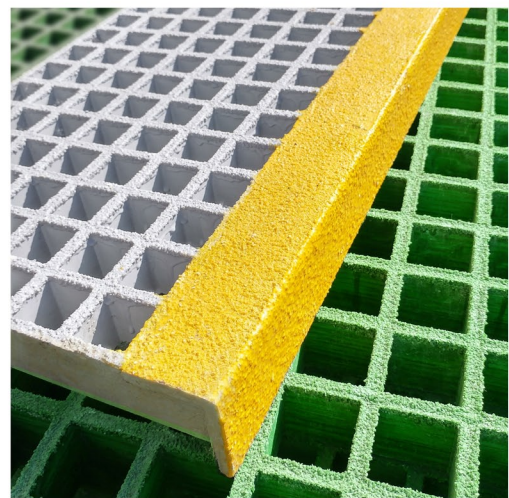
#### Technical Details

#### Standard

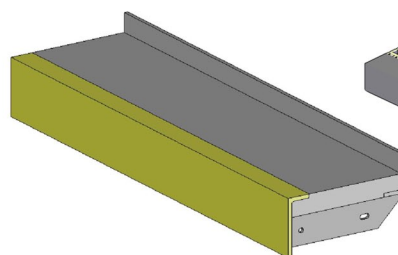
Resin Types		Isophthalic Polyester, Vinylester	
Surface Finish		Gritted, Concave (Miniscus), Polished	
Height		Typically 38mm	
Bar Thickness	Top	7mm	
	Bottom	5mm	
Slip Resistance		Gritted, PTV 68 (Wet), Concave PTV 45 (Wet)	BS7976
Mesh Pitch		Varies dependant on grating type	
Mesh Opening		Varies dependant on grating type	
Fixing compatability		Dependant on mesh type and pitch	
Colours (stocked)		Grey/ Yellow, Green/Yellow, Grey/Black	

#### GRP Grating Treads with solid edges

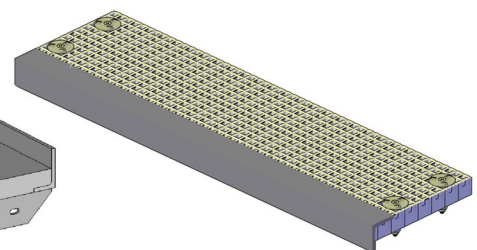
Model code	Depth B	Width L	D	E	F	G
K538-38-5	245	617	120	91	76	61
		807				
		997				
K538-38-5	283	617	150	99	114	61
		807				
		997				
K538-38-5	322	617	180	108	152	62
		807				
		997				



Standard Tread / Cleat Dimensions



Heavy Duty Solid Top Tread



Standard Micromesh Tread

