

# Forge Welded Metal Gratings

## Data Sheet

### Open Steel Gratings-SP525-34/100-5 (St/St 304)

Forge Welded stainless steel gratings are a high quality grating material. They have an exceptional finish which is typically suitable for use on prestigious projects or specialist markets like the food industry, pharmaceutical, chemical and marine. These gratings are made from flat bearing bars and rebar transverse bars. Stock panels are manufactured in 6000mm long x 1000mm wide. The forge welded process produces a material with complete integrity which allows it to be cut or shaped to required sizes.

#### Technical Details

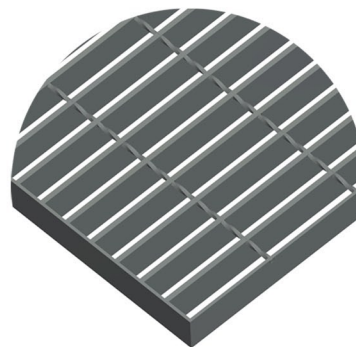
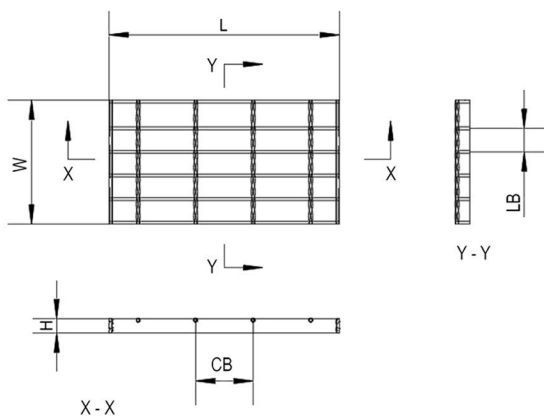
Material	Stainless Steel Grade 304	Standard	BS EN 10204-3.1
Finish	Self Colour, pickled		BS EN 10088-2
Depth	25mm		
Thickness	Load Bar (LB) 5mm		
	Cross Bar (CB) 5mm (Rebar)		
Slip Resistance, Surface Type	PTV 44 (Wet), Plain		BS7976
Mesh Pitch	34mm x 100mm, 35mm Ball proof		BS EN ISO 14122
Standard Stocked Sizes	6000mm x 1000mm (L x W)		
Fixing compatibility	B138K, B138T		

#### Loading

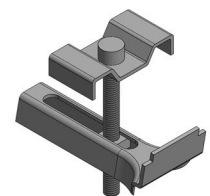
Max Clear Span	1060mm	*Clear distance between supports
Uniform Distributed Load	5kN/m <sup>2</sup>	UDL to conform to **EN ISO 14122
Point Load Deflection	3.99mm	Deflection for point load at given span
Point Load	1.5kN	Point Load to conform **EN ISO 14122
Contact Area	200 x 200mm	Point load area
UDL Deflection	2.17mm	Deflection for UDL load at given span

\*Supports must be fully supported on two opposing sides of the clear span

\*\* EN ISO 14122 states deflection between adjacent loaded and unloaded panels must not exceed 4mm



Fixing Types



B138K



B138T

